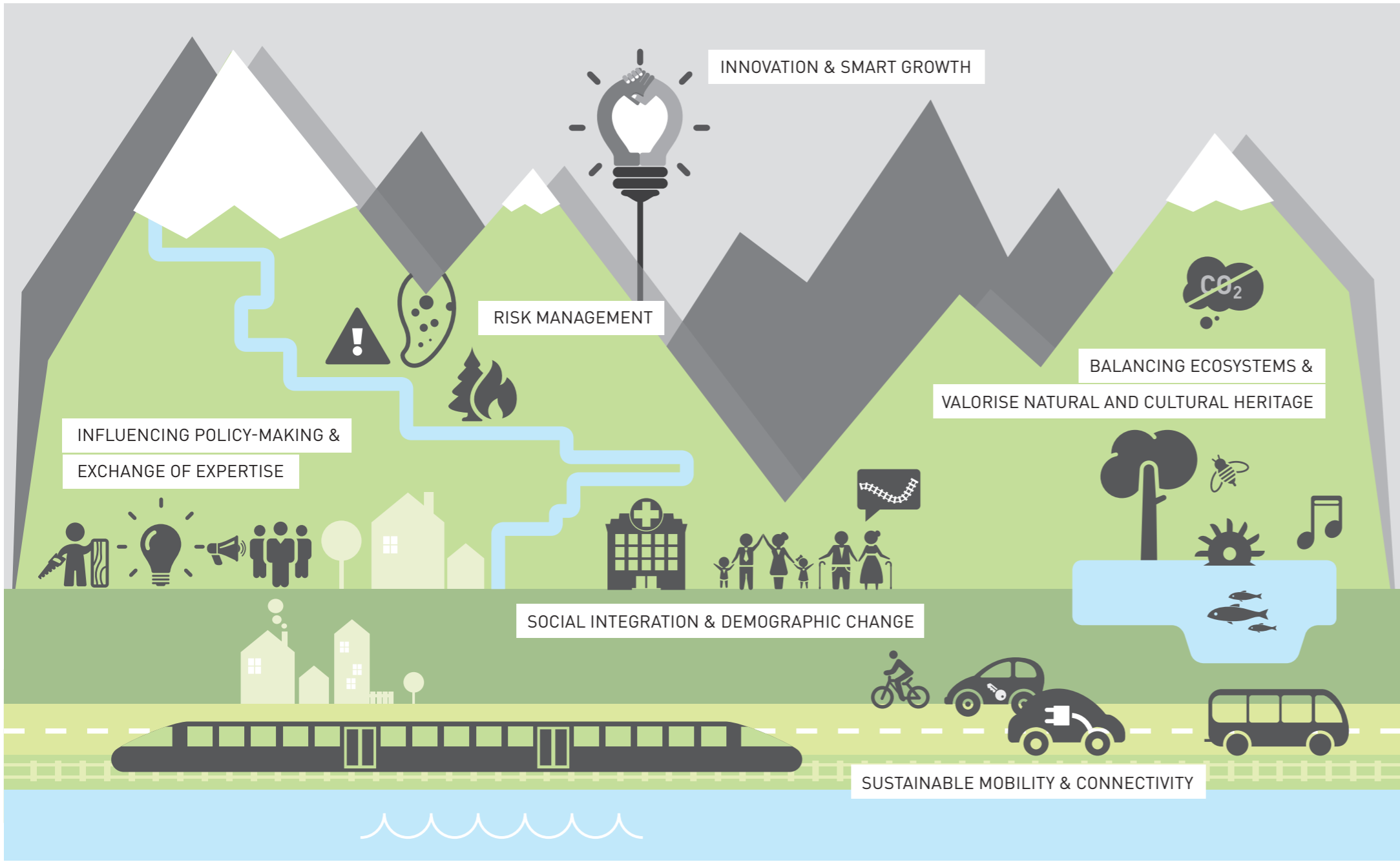


THE ALPINE SPACE PROGRAMME AT A GLANCE



Alpine Space programme



ABOUT

The Alpine Space programme connects actors from various sectors and different policy levels from the programme's 7 countries. They cooperate to tackle common challenges, exchange ideas and develop new working methods, with the aim of influencing policy-making. Sharing their experiences and expertise, they work towards improving the quality of life for 66 million people in one of the most unique areas of Europe. Actions supported by the programme help to make the Alpine Space more innovative, CO₂-friendly, better connected and they contribute to an improved governance.

Budget
The programme is financed through the European Regional Development Fund (ERDF) as well as through national public and private contributions of the partner states. Projects can be co-financed through ERDF at a rate of up to 85%. For the 2014–2020 period, the total budget is €139 million.

Who can participate?
The programme addresses public authorities on national, regional and local level, institutions of higher education, as well as enterprises, business support organisations, NGOs and associations.

How do I get involved?
Calls for project proposals are opened on a regular basis. They will be published on the Alpine Space programme website.

PRIORITIES



INNOVATIVE
Services of general interest
Knowledge transfer
Eco-innovation
Smart businesses



LOW CARBON
Mobility
Transport
Energy-efficiency
Modal shift



LIVEABLE
Biodiversity
Ecosystem services
Cultural & natural heritage
Natural risk management



WELL-GOVERNED
Participation
Governance
Voices
Multilevel
Policy instruments

COOPERATION AREA



CONTACT INFORMATION

Please find our project database and library of project achievements here:

www.alpine-space.eu

Joint Secretariat
c/o Bayerisches Landesamt für Umwelt
Heßstraße 128
80797 München – Germany
js@alpine-space.eu
Tel.: +49 (0)89 9214 1800

Managing Authority
Land Salzburg
Abt. 1/01
Südtiroler Platz 11
5010 Salzburg – Austria
alpine.space@salzburg.gv.at
Tel.: +43 (0)662 8042 3789